



**Certificate of Analysis**

R&D

**Client Information:**

**TRIBETOKES**

55 MADISON AVE SUITE 400  
MORRISTOWN, NEW JERSEY 07960

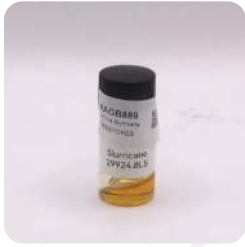
Batch # D8 Live Slurrricane  
Batch Date: 2024-10-28  
Extracted From: Hemp

Test Reg State: Oregon

Order # TRI241028-050001  
Order Date: 2024-10-28  
Sample # AAGB889

Sampling Date: 2024-10-31  
Lab Batch Date: 2024-10-31  
Completion Date: 2024-11-04

Initial Gross Weight: 8.035 g



Product Image



**Potency  
Tested**

**Delta 8/Delta 10 Potency 13 - (LCUV)**

Specimen Weight: 501.040 mg

**Tested**

SOP13.001 (LCUV)

Analyte	LOD (%)	LOQ (%)	Result (mg/g)	Result (%)
Delta-8 THC	2.60E-5	0.015	805.190	80.519
CBDA	1.00E-5	0.015	78.150	7.815
CBD	5.40E-5	0.015	3.850	0.385
THCA-A	3.20E-5	0.015	2.220	0.222
CBN	1.40E-5	0.015	1.630	0.163
CBGA	8.00E-5	0.015	1.090	0.109
CBC	1.80E-5	0.015	0.330	0.033
CBG	2.48E-4	0.015	0.330	0.033
CBDV	6.50E-5	0.015	<LOQ	<LOQ
Delta-10 THC	3.00E-6	0.015	<LOQ	<LOQ
Delta-9 THC	1.30E-5	0.015	<LOQ	<LOQ
Delta6a10a-THC	8.47E-5	0.015	<LOQ	<LOQ
THCV	7.00E-6	0.015	<LOQ	<LOQ
Total Active CBD			72.388	7.239
Total Active THC			1.947	0.195



**Potency Summary**

<b>Total Delta 8</b> 80.519%	<b>Total Delta 10</b> None Detected
<b>Total Active THC</b> 0.195%	<b>Total Active CBD</b> 7.239%
<b>Total CBG</b> 0.129%	<b>Total CBN</b> 0.163%
<b>Total Cannabinoids</b> 89.279%	

*Aixia Sun*  
Aixia Sun Lab Director/Principal Scientist  
D.H.Sc., M.Sc., B.Sc., MT (AAB)



Definitions and Abbreviations used in this report: Total Active CBD = CBD + (CBD-A \* 0.877), \*Total CBDV = CBDV + (CBDVA \* 0.867), Total Active THC = THCA-A \* 0.877 + Delta 9 THC, Total THC = THC + (THCVA \* 0.87), CBG Total = (CBGA \* 0.878) + CBG, CBN Total = (CBNA \* 0.876) + CBN, Total CBC = CBC + (CBCA \* 0.877), Total THC-O-Acetate = Delta 8 THC-O-Acetate + Delta 9 THC-O-Acetate, Total THCP = Delta8-THCP + Delta9-THCP, Total Cannabinoids = Total percentage of cannabinoids within the sample. (mg/ml) = Milligrams per Milliliter, LOQ = Limit of Quantitation, LOD = Limit of Detection, Dilution = Dilution Factor, (ppb) = Parts per Billion, (%) = Percent, (cfu/g) = Colony Forming Unit per Gram, (µg/g) = Microgram per Gram, (ppm) = Parts per Million, (ppm) = (µg/g), (aw) = Water Activity, (mg/Kg) = Milligram per Kilogram. ACS uses simple acceptance criteria. Passed - Analyte/microbe is not detected or is at the level below the action limit per OR rule OAR 333-007-0390, OAR 333-007-0400. Failed - Analyte/microbe is at the level that equal or above the action limit per OR rule OAR 333-007-0390, OAR 333-007-0400 Sample not received via laboratory sampling.  
This report shall not be reproduced, without written approval, from ACS Laboratory. The results of this report relate only to the material or product analyzed. Test results are confidential unless explicitly waived otherwise. ACS Laboratory is accredited to the ISO/IEC 17025:2017 Standard.

**Certificate of Analysis**  
Compliance Test

**Client Information:**  
TRIBETOKES

Batch # 03DST231-ISOD Test Reg State: Oregon  
Batch Date: 2024-05-27  
Extracted From: CBD Hemp

Order # THE240530-030001 Sampling Date: 2024-06-01 Initial Gross Weight: 26.605 g  
Order Date: 2024-05-30 Lab Batch Date: 2024-06-01  
Sample # AAFQ222 Completion Date: 2024-06-05



Product Image

**Potency Tested**
**Heavy Metals Passed**
**Pesticides Passed**
**Residual Solvents Passed**

**Delta 8/Delta 10 Potency 13 - (LCUV)**

Specimen Weight: 502.300 mg

**Tested**

SOP13.001 (LCUV)

Analyte	LOD (%)	LOQ (%)	Result (mg/g)	Result (%)
Delta-8 THC	2.60E-5	0.015	969.070	96.907
CBN	1.40E-5	0.015	1.840	0.184
CBD	5.40E-5	0.015	1.460	0.146
CBC	1.80E-5	0.015	<LOQ	<LOQ
CBDA	1.00E-5	0.015	<LOQ	<LOQ
CBDV	6.50E-5	0.015	<LOQ	<LOQ
CBG	2.48E-4	0.015	<LOQ	<LOQ
CBGA	8.00E-5	0.015	<LOQ	<LOQ
Delta-10 THC	3.00E-6	0.015	<LOQ	<LOQ
Delta-9 THC	1.30E-5	0.015	<LOQ	<LOQ
Delta6a10a-THC	8.47E-5	0.015	<LOQ	<LOQ
THCA-A	3.20E-5	0.015	<LOQ	<LOQ
THCV	7.00E-6	0.015	<LOQ	<LOQ
Total Active CBD			1.460	0.146
Total Active THC			<LOQ	<LOQ

**Potency Summary**

<b>Total Delta 8</b> 96.907%	<b>Total Delta 10</b> None Detected
<b>Total Active THC</b> None Detected	<b>Total Active CBD</b> 0.146%
<b>Total CBG</b> None Detected	<b>Total CBN</b> 0.184%
<b>Total Cannabinoids</b> 97.237%	

*Aixia Sun*  
Aixia Sun Lab Director/Principal Scientist  
D.H.Sc., M.Sc., B.Sc., MT (AAB)



Definitions and Abbreviations used in this report: Total Active CBD = CBD + (CBD-A \* 0.877), \*Total CBDV = CBDV + (CBDVA \* 0.87), Total Active THC = THCA-A \* 0.877 + Delta 9 THC, Total THC = THC + (THCVA \* 0.87), CBG Total = (CBGA \* 0.877) + CBG, CBN Total = (CBNA \* 0.877) + CBN, Total CBC = CBC + (CBCA \* 0.877), Total THC-O-Acetate = Delta 8 THC-O-Acetate + Delta 9 THC-O-Acetate, Total THCP = Delta8-THCP + Delta9-THCP, Total Cannabinoids = Total percentage of cannabinoids within the sample. (mg/ml) = Milligrams per Milliliter, LOQ = Limit of Quantitation, LOD = Limit of Detection, Dilution = Dilution Factor, (ppb) = Parts per Billion, (%) = Percent, (cfu/g) = Colony Forming Unit per Gram, (µg/g) = Microgram per Gram, (ppm) = Parts per Million, (ppm) = (µg/g), (aw) = Water Activity, (mg/Kg) = Milligram per Kilogram. ACS uses simple acceptance criteria. Passed - Analyte/microbe is not detected or is at the level below the action limit per OR rule OAR 333-007-0390, OAR 333-007-0400. Failed - Analyte/microbe is at the level that equal or above the action limit per OR rule OAR 333-007-0390, OAR 333-007-0400 Sample not received via laboratory sampling.  
This report shall not be reproduced, without written approval, from ACS Laboratory. The results of this report relate only to the material or product analyzed. Test results are confidential unless explicitly waived otherwise. ACS Laboratory is accredited to the ISO/IEC 17025:2017 Standard.

**Certificate of Analysis**  
Compliance Test

**Client Information:**  
TRIBETOKES

Batch # 03DST231-ISOD  
Batch Date: 2024-05-27  
Extracted From: CBD Hemp

Test Reg State: Oregon

Order # THE240530-030001  
Order Date: 2024-05-30  
Sample # AAFQ222

Sampling Date: 2024-06-01  
Lab Batch Date: 2024-06-01  
Completion Date: 2024-06-05

Initial Gross Weight: 26.605 g



**Heavy Metals**

Specimen Weight: 253.030 mg

**Passed**

SOP13.048 (ICP-MS)

Dilution Factor: 197

Analyte	LOD (ppb)	LOQ (ppb)	Action Level (ppb)	Result (ppb)	Analyte	LOD (ppb)	LOQ (ppb)	Action Level (ppb)	Result (ppb)
Arsenic (As)	4.83	100	200	<LOQ	Lead (Pb)	11.76	100	500	<LOQ
Cadmium (Cd)	.64	100	200	<LOQ	Mercury (Hg)	.58	100	200	<LOQ



**Residual Solvents - FL (CBD)**

Specimen Weight: 300.300 mg

**Passed**

SOP13.039 (GCMS)

Dilution Factor: 500.000

Analyte	LOD (ppm)	LOQ (ppm)	Action Level (ppm)	Result (ppm)	Analyte	LOD (ppm)	LOQ (ppm)	Action Level (ppm)	Result (ppm)
1,1-Dichloroethene	0.0094	0.16	8	<LOQ	Heptane	0.0013	1.39	5000	<LOQ
1,2-Dichloroethane	0.0003	0.04	5	<LOQ	Hexane	0.068	1.17	290	<LOQ
Acetone	0.015	2.08	5000	<LOQ	Isopropyl alcohol	0.0048	1.39	500	<LOQ
Acetonitrile	0.06	1.17	410	<LOQ	Methanol	0.0005	0.69	3000	<LOQ
Benzene	0.0002	0.02	2	<LOQ	Methylene chloride	0.0029	2.43	600	<LOQ
Butanes	0.4167	2.5	2000	<LOQ	Pentane	0.037	2.08	5000	<LOQ
Chloroform	0.0001	0.04	60	<LOQ	Propane	0.031	5.83	2100	<LOQ
Ethanol	0.0021	2.78	5000	<LOQ	Toluene	0.0009	2.92	890	<LOQ
Ethyl Acetate	0.0012	1.11	5000	<LOQ	Total Xylenes	0.0001	2.92	2170	<LOQ
Ethyl Ether	0.0049	1.39	5000	<LOQ	Trichloroethylene	0.0014	0.49	80	<LOQ
Ethylene Oxide	0.0038	0.1	5	<LOQ					

Aixia Sun Lab Director/Principal Scientist  
D.H.Sc., M.Sc., B.Sc., MT (AAB)

Definitions are found on page 1

This report shall not be reproduced, without written approval, from ACS Laboratory. The results of this report relate only to the material or product analyzed. Test results are confidential unless explicitly waived otherwise. ACS Laboratory is accredited to the ISO/IEC 17025:2017 Standard.



**Certificate of Analysis**  
Compliance Test

Client Information:  
**TRIBETOKES**

Batch # 03DST231-ISOD  
Batch Date: 2024-05-27  
Extracted From: CBD Hemp

Test Reg State: Oregon

Order # THE240530-030001  
Order Date: 2024-05-30  
Sample # AAFQ222

Sampling Date: 2024-06-01  
Lab Batch Date: 2024-06-01  
Completion Date: 2024-06-05

Initial Gross Weight: 26.605 g

**Pesticides**  
Specimen Weight: 582.010 mg

**Passed**  
SOP13.007 (LCMS/GCMS)

Dilution Factor: 2.580

Analyte	LOD (ppb)	LOQ (ppb)	Action Level (ppb)	Result (ppb)	Analyte	LOD (ppb)	LOQ (ppb)	Action Level (ppb)	Result (ppb)
Abamectin	2.8800E-1	28.23	100	<LOQ	Fludioxonil	1.7400E+0	48	100	<LOQ
Acephate	2.3000E-2	30	100	<LOQ	Hexythiazox	4.9000E-2	30	100	<LOQ
Acequinocyl	9.5640E+0	48	100	<LOQ	Imazalil	2.4800E-1	30	100	<LOQ
Acetamiprid	5.2000E-2	30	100	<LOQ	Imidacloprid	9.4000E-2	30	400	<LOQ
Aldicarb	2.6000E-2	30	100	<LOQ	Kresoxim Methyl	4.2000E-2	30	100	<LOQ
Azoxystrobin	8.1000E-2	10	100	<LOQ	Malathion	8.2000E-2	30	200	<LOQ
Bifenazate	1.4150E+0	30	100	<LOQ	Metalaxyl	8.1000E-2	10	100	<LOQ
Bifenthrin	4.3000E-2	30	200	<LOQ	Methiocarb	3.2000E-2	30	100	<LOQ
Boscalid	5.5000E-2	10	100	<LOQ	Methomyl	2.2000E-2	30	100	<LOQ
Captan	6.1200E+0	30	700	<LOQ	methyl-Parathion	1.7100E+0	10	100	<LOQ
Carbaryl	2.2000E-2	10	500	<LOQ	Mevinphos	2.1500E+0	10	100	<LOQ
Carbofuran	3.4000E-2	10	100	<LOQ	Myclobutanil	1.0290E+0	30	100	<LOQ
Chlorantraniliprole	3.3000E-2	10	1000	<LOQ	Naled	9.5000E-2	30	250	<LOQ
Chlordane	1.0000E+1	10	100	<LOQ	Oxamyl	2.5000E-2	30	500	<LOQ
Chlorfenapyr	3.4000E-2	30	100	<LOQ	Paclbutrazol	6.5000E-2	30	100	<LOQ
Chloromequat Chloride	1.0800E-1	10	1000	<LOQ	Pentachloronitrobenzene	1.3200E+0	10	150	<LOQ
Chlorpyrifos	3.5000E-2	30	100	<LOQ	Permethrin	3.4300E-1	30	100	<LOQ
Clofentezine	1.1900E-1	30	200	<LOQ	Phosmet	8.2000E-2	30	100	<LOQ
Coumaphos	3.7700E+0	48	100	<LOQ	Piperonylbutoxide	2.9000E-2	30	3000	<LOQ
Cyfluthrin	3.1100E+0	30	500	<LOQ	Prallethrin	7.9800E-1	30	100	<LOQ
Cypermethrin	1.4490E+0	30	500	<LOQ	Propiconazole	7.0000E-2	30	100	<LOQ
Daminozide	8.8500E-1	30	100	<LOQ	Propoxur	4.6000E-2	30	100	<LOQ
Diazinon	4.4000E-2	30	100	<LOQ	Pyrethrins	2.3593E+1	30	500	<LOQ
Dichlorvos	2.1820E+0	30	100	<LOQ	Pyridaben	3.2000E-2	30	200	<LOQ
Dimethoate	2.1000E-2	30	100	<LOQ	Spinetoram	8.0000E-2	10	200	<LOQ
Dimethomorph	5.8300E+0	48	200	<LOQ	Spinosad	8.8000E-2	30	100	<LOQ
Ethoprophos	3.6000E-1	30	100	<LOQ	Spiromesifen	2.6100E-1	30	100	<LOQ
Etofenprox	1.1600E-1	30	100	<LOQ	Spirotetramat	8.9000E-2	30	100	<LOQ
Etoxazole	9.5000E-2	30	100	<LOQ	Spiroxamine	1.3100E-1	30	100	<LOQ
Fenhexamid	5.1000E-1	10	100	<LOQ	Tebuconazole	6.7000E-2	30	100	<LOQ
Fenoxycarb	1.0700E-1	30	100	<LOQ	Thiacloprid	6.4000E-2	30	100	<LOQ
Fenpyroximate	1.3800E-1	30	100	<LOQ	Thiamethoxam	5.0000E-2	30	500	<LOQ
Fipronil	1.0700E-1	30	100	<LOQ	Trifloxystrobin	3.7000E-2	30	100	<LOQ
Flonicamid	5.1700E-1	30	100	<LOQ					

*Aixia Sun*  
Aixia Sun Lab Director/Principal Scientist  
D.H.Sc., M.Sc., B.Sc., MT (AAB)

Definitions are found on page 1

This report shall not be reproduced, without written approval, from ACS Laboratory. The results of this report relate only to the material or product analyzed. Test results are confidential unless explicitly waived otherwise. ACS Laboratory is accredited to the ISO/IEC 17025:2017 Standard.

